

## 2023 CLUB PHRF FLEET



## Oriental Dinghy Club

[www.oriental dinghy club.com](http://www.oriental dinghy club.com)

### SAILING INSTRUCTIONS

#### 1 RULES

- 1.1 The series will be governed by the rules as defined in the 2021-2024 Racing Rules of Sailing
- 2.1 Notices to competitors and changes to sailing instructions will be posted on the ODC website and Facebook page before 0730 the day of the race.
- 2.2 There will be two cut off times for changes to the schedule  
     9:00 on Friday night in the case of extreme weather prediction  
     7:30 on Saturday  
     After 7:30, any changes will be made on the water by the race committee
- 2.3 For on the water oral changes of the sailing instructions the "L" flag will be displayed on the signal boat. The change will be announced on VHF channel 78A prior to the warning signal.

#### 3 COMMUNICARION WITH COMPETITORS

- 3.1 Notices to competitors will be on the day of the race will be communicated by the race committee on VHF channel 78a

#### 4 CODE OF CONDUCT

- 4.1 Competitors and support persons shall comply with all reasonable requests from race officials.

#### 5 SIGNALS MADE ASHORE

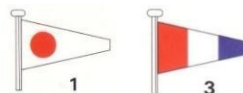
- 5.1 No signals will be made ashore due to the distributed nature of our club. Monitor VHF Channel 78a for Race Committee communications.

#### 6 SCHEDULE OF RACES

- 6.1 Racing dates: See the official schedule posted on ODC website: [www.oriental dinghy club.com/racing.html](http://www.oriental dinghy club.com/racing.html)
- 6.2 Number of races: Up to 4 races may be sailed each day.
- 6.3 The scheduled time of the warning signal for the first race of the Spinnaker class is 1300. No Races will be started after 1600.
- 6.4 **If the Cruising Class is present, the warning gun for the first boat will be at 12:30. Only one race will be sailed for the Cruising Class.**

#### 7 CLASS FLAGS

- 7.1 The class flags
- 1 JAM – PHRF (all ratings) [Pennant "1"]
  - 3 SPIN– PHRF (all ratings) [Pennant "3"]
  - 4 **Cruising - Cruising Boats - Pursuite Race [Pennant "6"]**



#### 8 RACE AREA

- 8.1 The signal boat will set a course on the waters off of Oriental, NC, generally north east of mark SC1.

#### 9 COURSES

##### 9.1 Spinnaker and JAM Classes

The course for the Spinnaker and JAM Classes will be displayed on the Signal Vessel prior to each class's Warning Signal. Classes may be assigned different courses. The courses may be single or multiple windward/leeward (WL), triangle (T), or combinations. If more than one lap is to be sailed, a number indicating the

number of laps will be displayed. All marks are left to port. Course diagrams for the Spinnaker and JAM races are shown in the appendix to these sailing instructions.

## 9.2 **Cruising Class**

The warning signal for the first boat in the Cruising Class will be at 12:30. The courses to be sailed and start time offsets will be announced over the radio. One race will be sailed for the Cruising Class. After the start, the course will consist of government marks, Garbacon Shoal, "7", Adams Creek "AC1" and Oriental One "SC1".

## 10 **MARKS**

### 10.1 **Spinnaker and JAM Classes:**

Marks of the course for the Spinnaker and Cruising Classes will be ODC inflatable marks. The start/finish pin is a yellow inflatable mark.

### 10.2 **Cruising Class:**

Marks of the course for the Cruising Class will be government marks, Garbacon Shoal, "7", Adams Creek "AC1" and Oriental One "SC1". The start will be between the adjacent yellow inflatable mark and the orange flag on the ODC Signal Vessel.

## 11 **OBSTACLES**

11.1 The race course will not contain any known obstacles.

## 12 **THE START**

12.1 Per "The Racing Rules of Sailing", the Start sequence will be in accordance with Rule 26. This is a 5 minute sequence. ODC will normally use an automated starting system.

12.2 The warning signal will usually be preceded by a multiple beep "wake-up call".

12.3 The start line will be between the orange flag on the signal boat and the adjacent starting mark.

Boats whose warning signal has not been made shall stay clear of the starting area.

12.4 All boats shall pass by the signal boat on starboard tack and check in with the race committee after the Lima flag is flown and prior to their warning signal.

12.5 The start/finish line is closed except for starting and finishing.

12.6 The cruising class start will be a pursuit start with a standard 5 minute count down to for the first boat. All other boats will use the off set times provided by the Race Committee prior to the 5 minute signal.

## 13 **CHANGE OF THE NEXT LEG OF THE COURSE**

13.1 In the case of a change to the next leg of the course, the race committee will move the original mark or the finishing line to a new position.

## 14 **THE FINISH**

### 14.1 **Spinnaker and JAM Classes**

14.1.2 The finish line will be between the orange flag on the signal boat and the adjacent yellow finishing mark

14.1.3 Boats who have already finished shall stay clear of the starting finish area.

14.1.4 If the race committee is absent when a boat finishes, she shall report her finishing time, and her position in relation to nearby boats, to the race committee at the first reasonable opportunity.

### 14.2 **Cruising Class**

14.2.1 In a pursuit race, since the starts are off set, finishing will be based on the finish sequence.

14.2.2 The finish will be at government mark "SC1" when bearing 250 degrees and passing within 300 ft of "SC1".

## 15 **PENALTY TURNS**

15.1 RRS 44.1 is changed so that the Two-Turns Penalty is replaced by the One-Turn Penalty.

## 16 **TIME LIMIT**

16.1 The time limit for the first boat in the spinnaker and JAM classes to finish will be 1 hour and 30 minutes after its start of that class.

16.2 The time limit for the first boat in the Cruising class to finish will be 2 hours and 30 minutes after the start of the first boat.

- 16.3 Boats still racing 30 minutes after the first boat in their division sails the course and finishes will be scored TLE (Time Limit Expired).
- 16.4 Boats who are significantly behind may be scored PS (Position Secured). Notification will be made over VHF channel 78a and the boat will be asked to return to the starting area immediately.

## 17 HEARING REQUESTS

- 17.1 When a boat protests another boat, a red flag must be flown by the protestor until that race is finished.
- 17.2 Protesting boats shall notify the Race Committee upon crossing the finish line.
- 17.3 Protest forms are available on the website and should be filed with the Race Committee by 1800 on the day of the race.
- 17.4 All parties will be notified of the protest hearing time and location but email.

## 18 SCORING

- 18.1 The race will be scored using the Low Point System with 75 % of the total races sailed by the fleet counting towards the final score.
- 18.2 Boats not competing in a day's race will be scored DNS.
- 18.3 Boats scored TLE (Time Limit Expired) will be scored by the Race Committee points equal to the number of boats finishing within the time limit plus two without a hearing.
- 18.4 Boats Scored PS (Position Secured) will be scored by the Race Committee points equal to the number of finishers plus one without a hearing.
- 18.5 **For boats sailing in the cruising class pursuit race, since start times are off set, the scoring will be based on the finishing sequence.**

## 19 RADIO COMMUNICATION AND SAFETY REGULATIONS

- 19.1 Race communication will be on VHF channel 78A.
- 19.2 A boat that retires from a race shall notify the race committee at the first reasonable opportunity.

## 20 REPLACEMENT OF CREW OR EQUIPMENT

- 20.1 Substitution of competitors is allowed without prior approval.

## 21 EQUIPMENT AND MEASUREMENT CHECKS

- 21.1 A boat or equipment may be inspected at any time for compliance with the class rules, notice of race and sailing instructions.

## 22 SUPPORT TEAMS

- 22.1 Support teams, including all support persons and support person vessels, shall comply with all Race Committee instructions.

## 23 TRASH DISPOSAL

- 23.1 Trash may be placed aboard official [or support person] vessels.

## 24 PRISES

- 24.1 Prizes will be given out at the annual meeting to the winner of each class.

## 25 RISK STATEMENT

- 25.1 RRS 3 states: 'The responsibility for a boat's decision to participate in a race or to continue to race is hers alone.' By participating in this event each competitor agrees and acknowledges that sailing is a potentially dangerous activity with inherent risks. These risks include strong winds and rough seas, sudden changes in weather, failure of equipment, boat handling errors, poor seamanship by other boats, loss of balance on an unstable platform and fatigue resulting in increased risk of injury. **Inherent in the sport of sailing is the risk of permanent, catastrophic injury or death by drowning, trauma, hypothermia or other causes.**

## 26 INSURANCE

- 26.1 Each participating boat should be insured with a valid third-party liability insurance carrier.

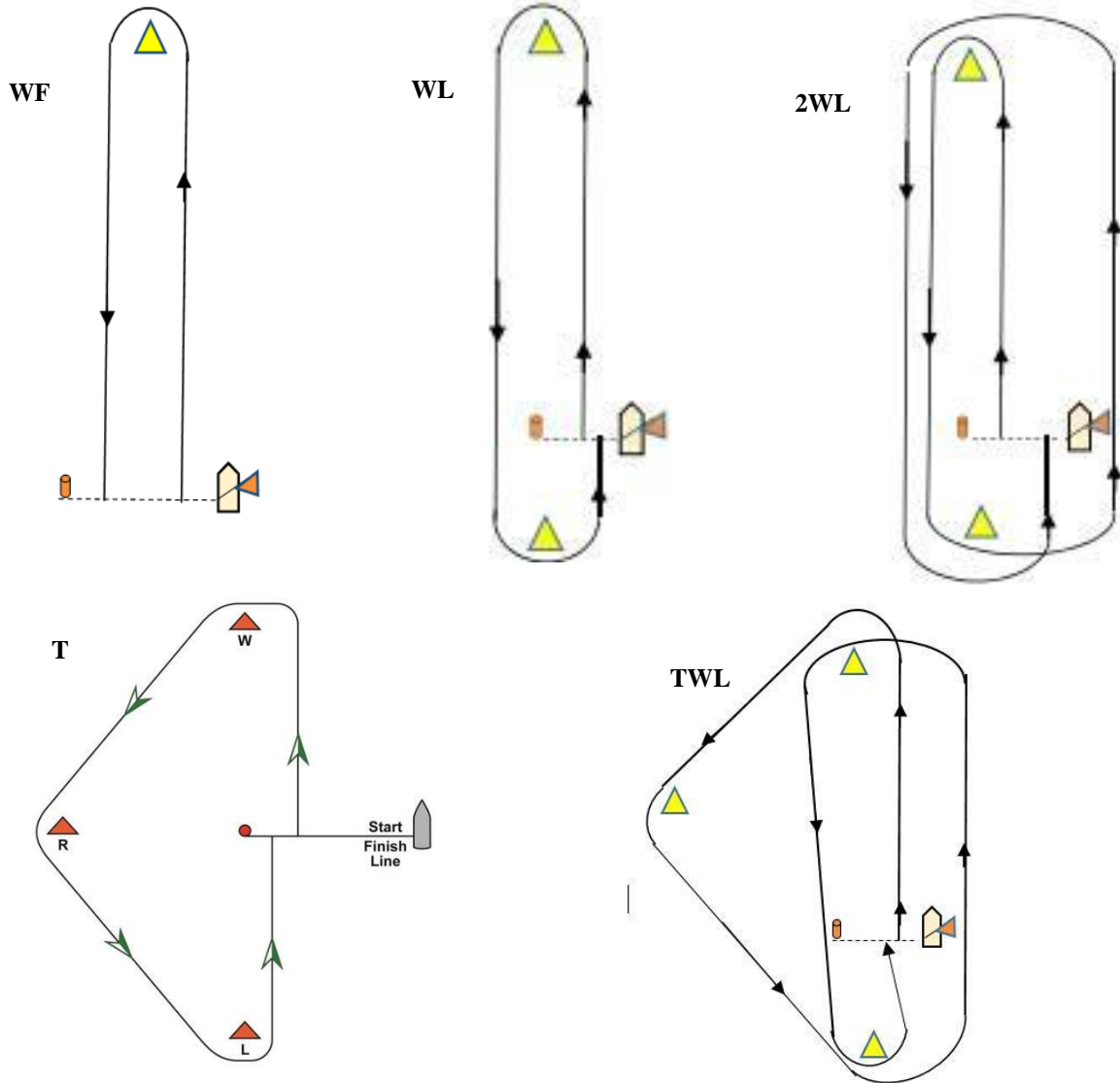
Courses will be indicated by an appropriate number plus letters displaced on the Signal Boat. All marks will be left to Port. The Starting mark is used only for the Start and Finish. After starting boats may not sail through the Start/Finish Line except to finish. Boats on 2nd weather leg, and all downwind legs, may pass either side of the Start/Finish Line.

Example: "2WL"

"2" indicates that competitors must sail 2 times around the course.

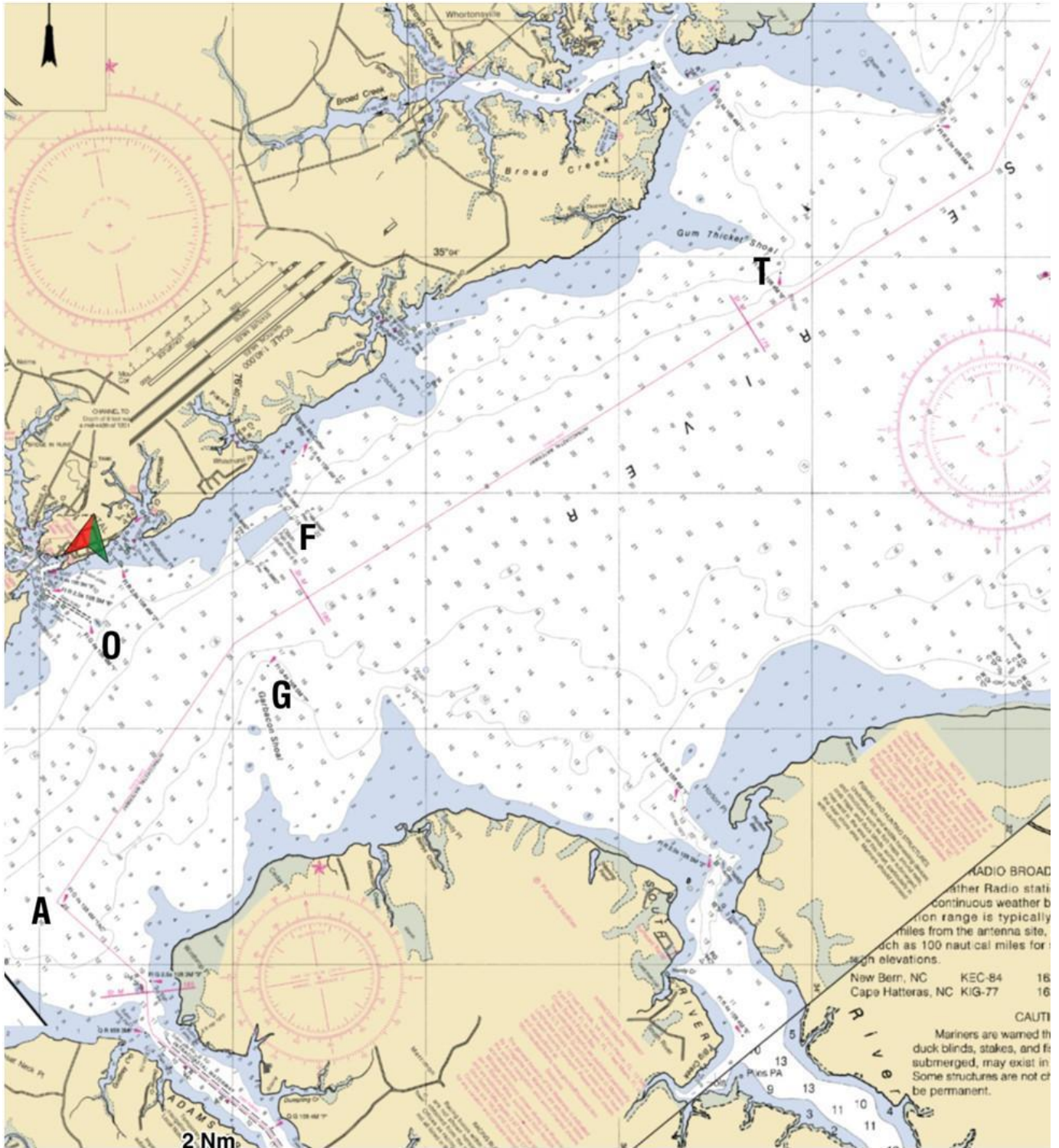
"WL" indicates course configuration is Windward/Leeward

### COURSE DIAGRAMS



Shoal





- O** – SC1 (Old Oriental 1)
- A** – Adams Creek 1
- G** – Garbacon
- T** – Gum Thicket
- F** – ARG (South ARS 396 B)